



2023 Fall Energy Symposium - Future of Farming Panel

Conservation “Matchmaking” 101

Kelley Delpit

Klamath Program Manager

SUSTAINABLE
NORTHWEST 

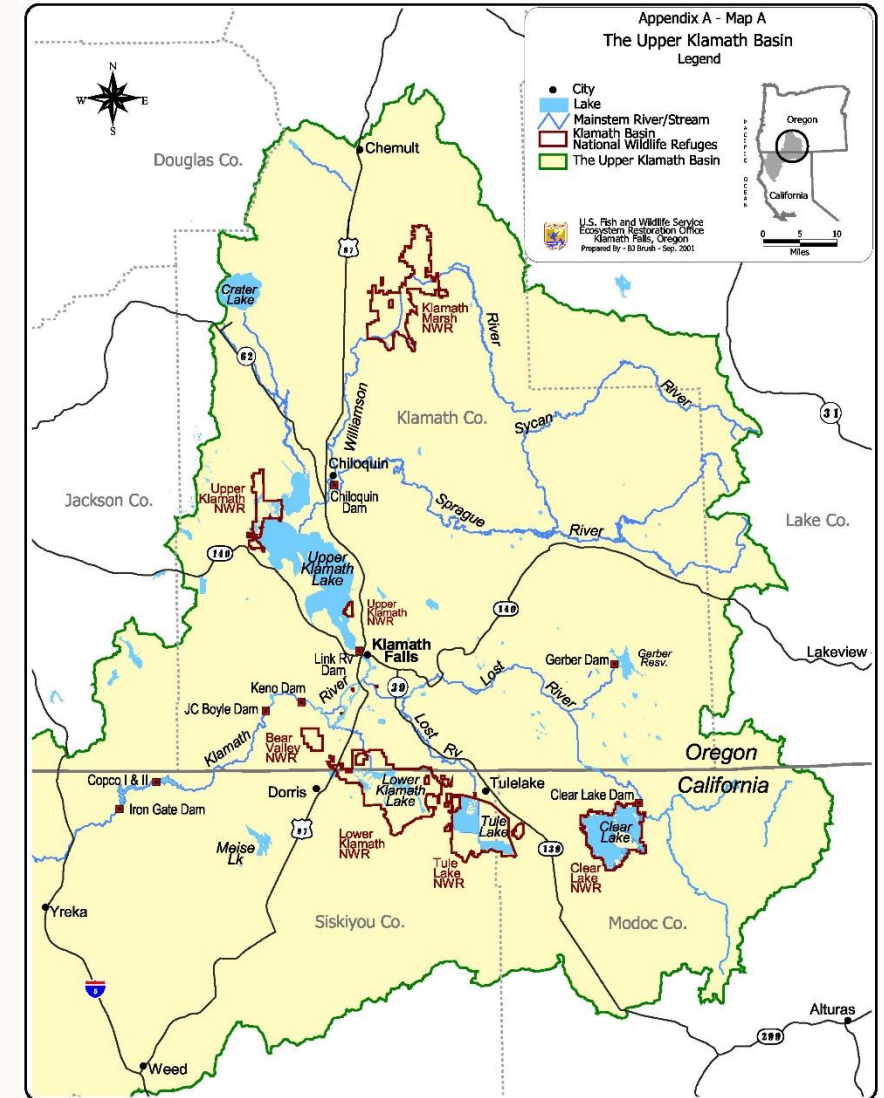
Upper Klamath Basin - Crisis and Opportunity

Crisis Breeds Opportunity

- KB “crises” of 2001, 2021

Agency Ranch

- Transitioned from high density flood irrigation to sustainable grazing and conservation management
- Klamath Basin Rangeland Trust was our “matchmaker”



Landowners, Meet the Answer to Your Problems!

- It's not easy being a lonely, overburdened farmer/rancher
- There are partners and resources that can help!

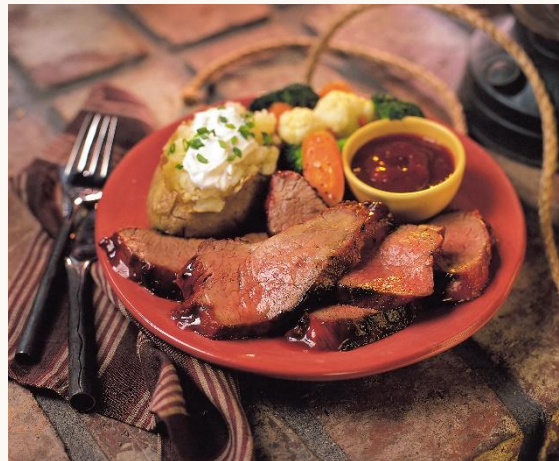


- *But how to make the connections and realize the benefits?*

Enter “Conservation Matchmakers!”

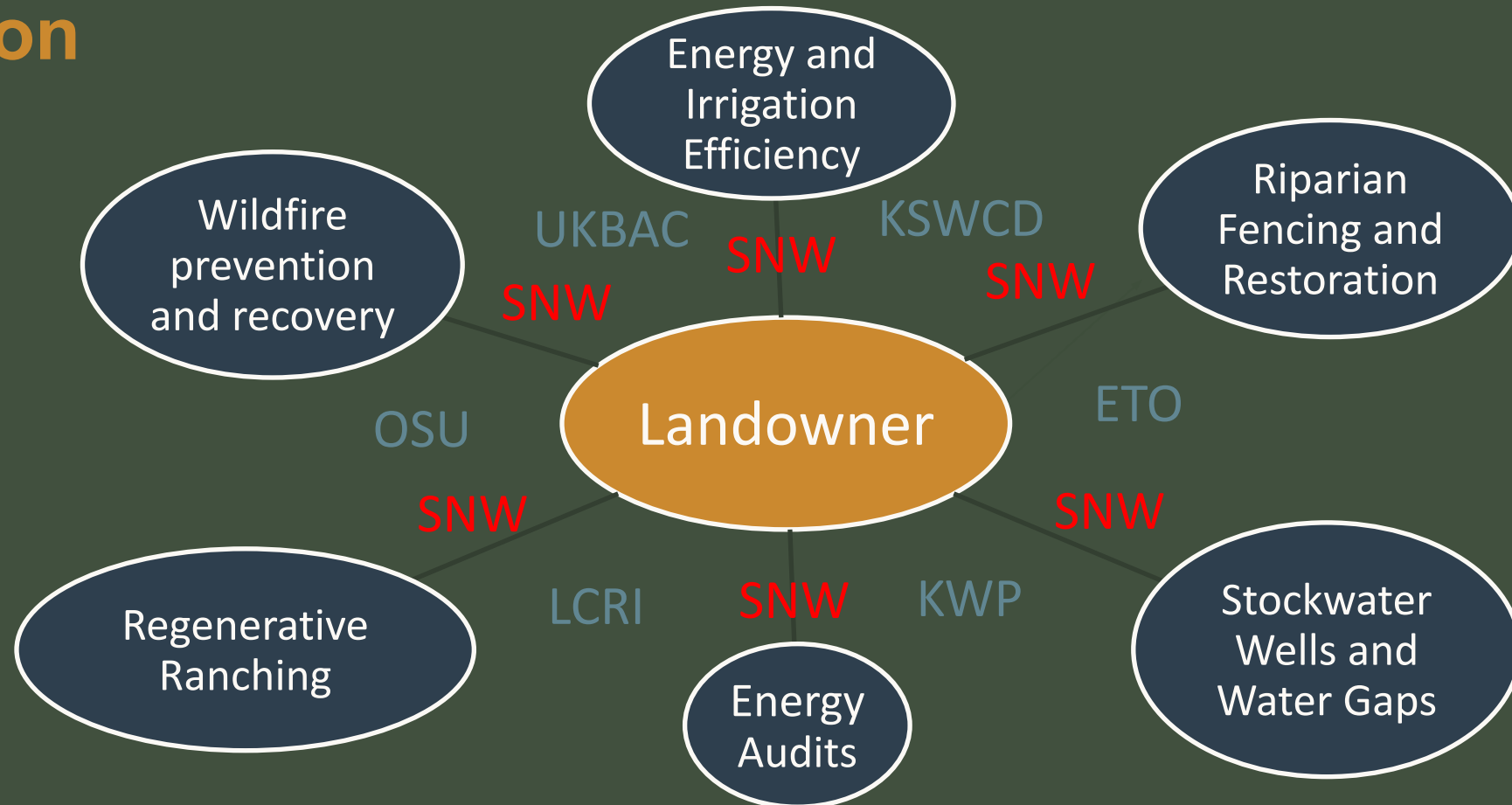
Organizations like SNW can help serve as facilitators, connecting landowners with conservation opportunities that meet their needs

- Create forums to aggregate and share information
 - UKB Producer Listening Sessions
 - UKB Producer Resources Newsletter
 - UKB Restoration Practitioners Meetings
- Strengthen trust, relationships, communication, awareness > participation
- *Delicious, hot, local food is key!*



Matches made in [Conservation/Economic Resilience] Heaven!

Since May of 2022, over \$850K in conservation project funding implemented in the UKB, as direct result of SNW facilitation



We are all (or can be) Matchmakers!

Be the bridge between your programmatic expertise/offerings and a landowner, residential customer, neighbor in need!

Thank you!

kdelpit@sustainablenorthwest.org

