



Hood River County Energy Plan

Cathy Higgins, Council Member
Buildings Committee Chair

Community Energy Panel
October 18, 2022

Hood River County Energy Council

HRC Energy Plan 5 Focus Areas



Buildings Design Construction and Occupancy



Transportation and Land Use



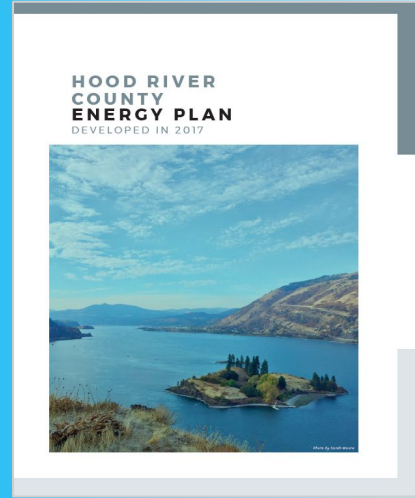
Community-Scale Solutions

Equity



Agriculture and Water

Adopted in 2018 by four local public entities:



Hood River County Energy Council

Today – Sharing from HRC

Three key areas to get a plan going:

1. People
2. Policies
3. Partners



1

People

Oregon Energy Affordability Gap

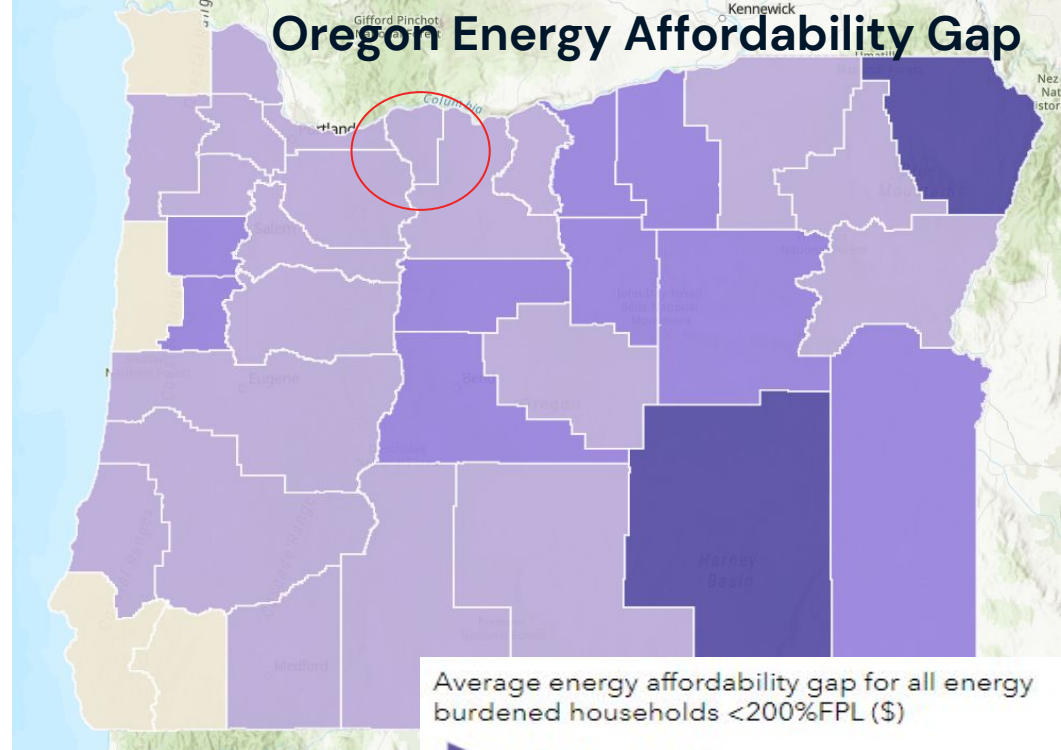
Get Some Data

- HRC Average Energy Affordability Gap: \$832
- % of HRC Households Energy Burdened: 25–31%
- 34% of Households Rent
- 90% of those waiting for

weatherization programs live in

Energy Affordability Gap: the difference between a household's actual energy costs and a "affordable" energy burden level equal to six percent of the household's income.

Energy Burden: the percent of household income spent on energy bills. Households that spend more than **six percent** of their income on energy are considered energy burdened.



Average energy affordability gap for all energy burdened households <200%FPL (\$)

\$1,101 - \$1,300

\$901 - \$1,100

\$701 - \$900

\$500 - \$700

Hood River County Energy Council

Bring in Health

- The buildings people work and live in can dramatically impact their health.
- Poorly sealed building envelopes, leaky windows, inefficient and malfunctioning appliances add up to more pollutants entering the home environment and increased health risk
- Tail pipe emissions

Oregon data shows disturbing number of heat wave deaths at mobile home parks

Updated: Jan. 29, 2022, 3:18 p.m. | Published: Aug. 06, 2021, 4:52 p.m.

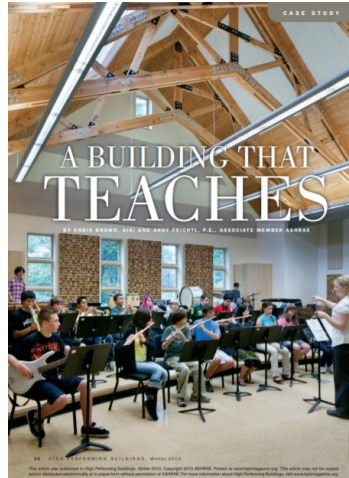
Energy plan programs influence health outcomes



Hood River County Energy Council

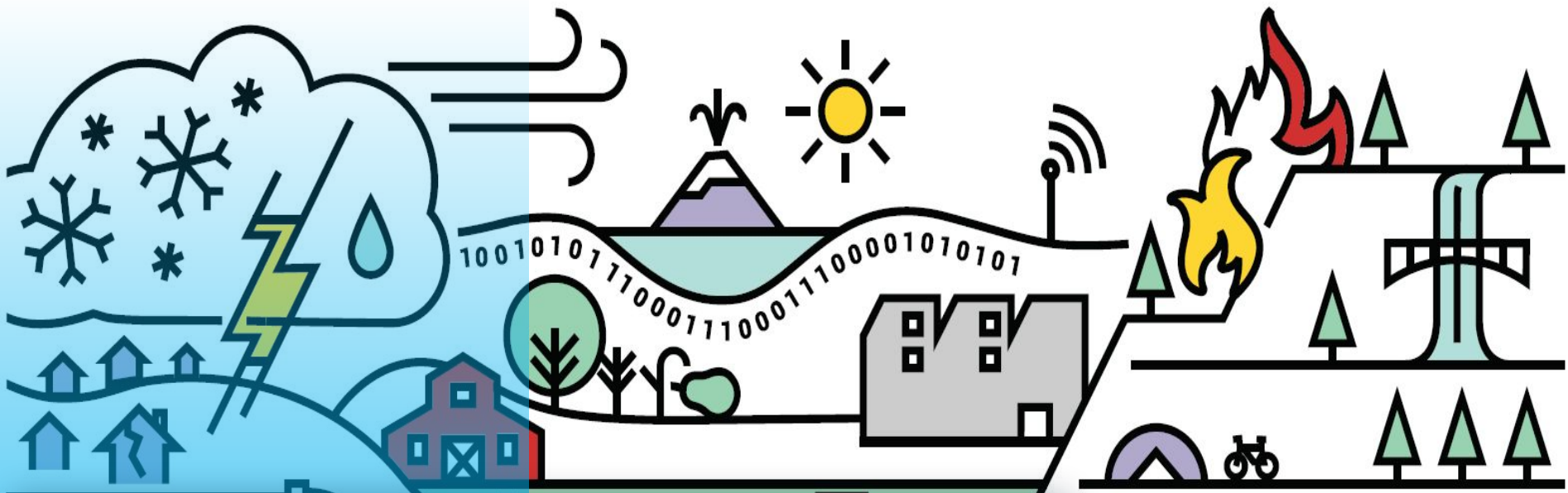
Community Engagement

- Think tank forums
- Surveys
- Notices
- Events
- Development Committee
- *Don't forget the kids!*

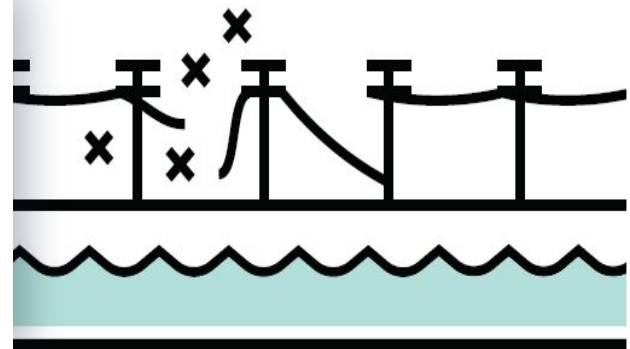


Gather input
and document
engagement.
Critical to
buy-in of the
plan.

2 Policies



What Could Possibly Go Wrong?



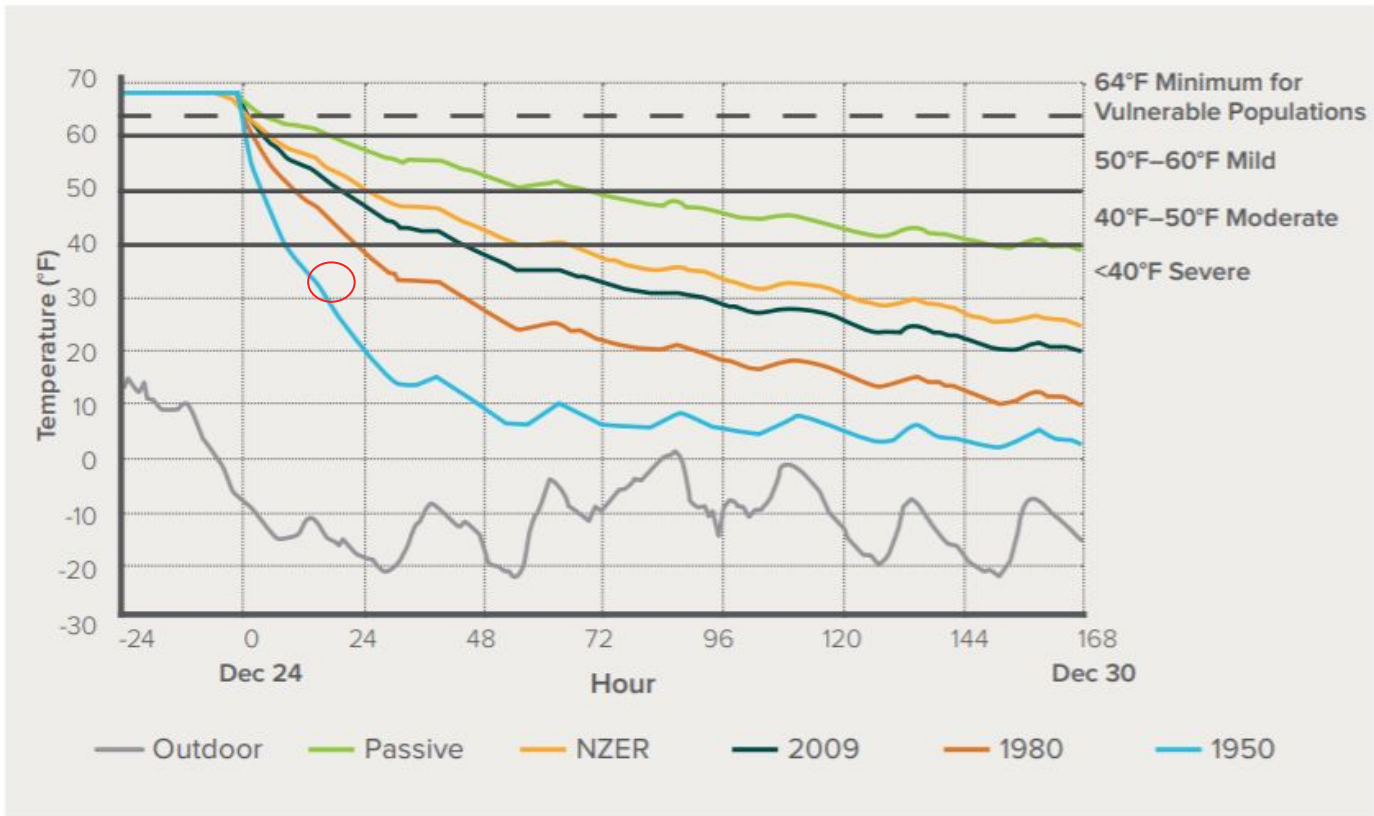
Align with Jurisdictions Objectives and Risks

- Resiliency
- Safety
- Operating Savings
- Carbon Reduction / Climate Plans
- Clean Environment
- Future Generations

Represent how
the Plan helps
reduce risk

EXHIBIT 2

Building Performance in Simulated Power Outage (begins 12/24)



Highly efficient buildings weather power outages with greater and longer lasting comfort

3 Partners

Can't do it alone

- Limited staff, funds, volunteers
- Oregon has good support
- Community expertise can be a surprise
- Build on other's models
- Partner

Partnerships
and the
supporting
entities
validate the
plan.

Project Partners



Hood River County Energy Council



NW Natural®



Columbia Cascade Housing Corp.



**Developing an energy plan
is hard...**

Implementation is harder...

But start down the road.